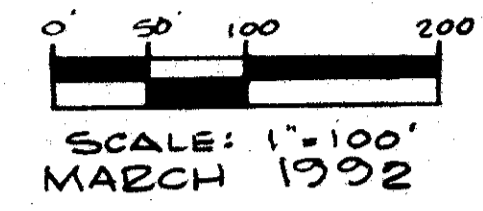


SHEET 3

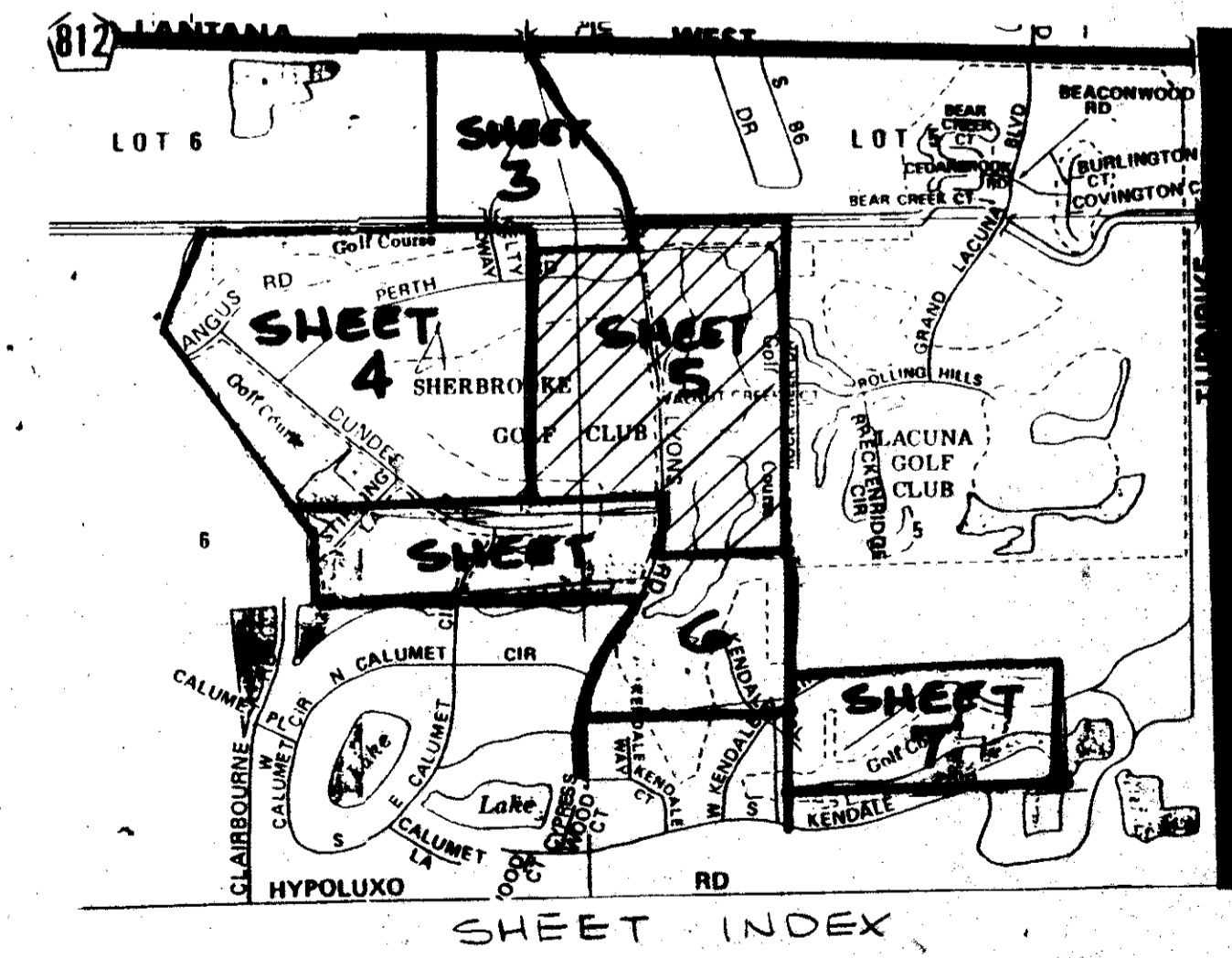


Sherbrooke

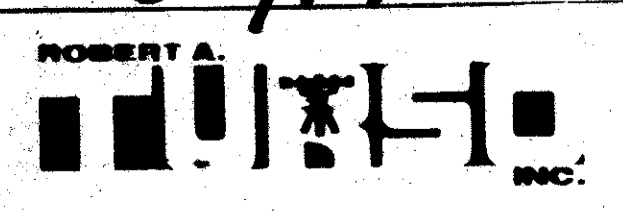
GOLF & COUNTRY CLUB
(P.U.D.)

PALM BEACH COUNTY, FLORIDA
PART OF TRACT 42, T44 1/2S, R42E
PART OF SECTIONS 5 & 6, T45S, R42E
REPLAT OF PART OF TRACTS 1 THRU 4, 13, 15 THRU 20, & 30
THRU 32, BLOCK 36; TRACTS 13 THRU 16, 17 THRU 20, 45 THRU
52, 75 THRU 80, 82 THRU 90, & 103 THRU 110, BLOCK 37,
PALM BEACH FARMS COMPANY PLAT 3, PLAT BOOK 2, PAGE 45
REPLAT OF PART OF LOT 1, BLOCK 42, PALM BEACH FARMS
COMPANY PLAT 13, PLAT BOOK 6, PAGE 99.

SHEET NO. 5 OF 7 SHEETS

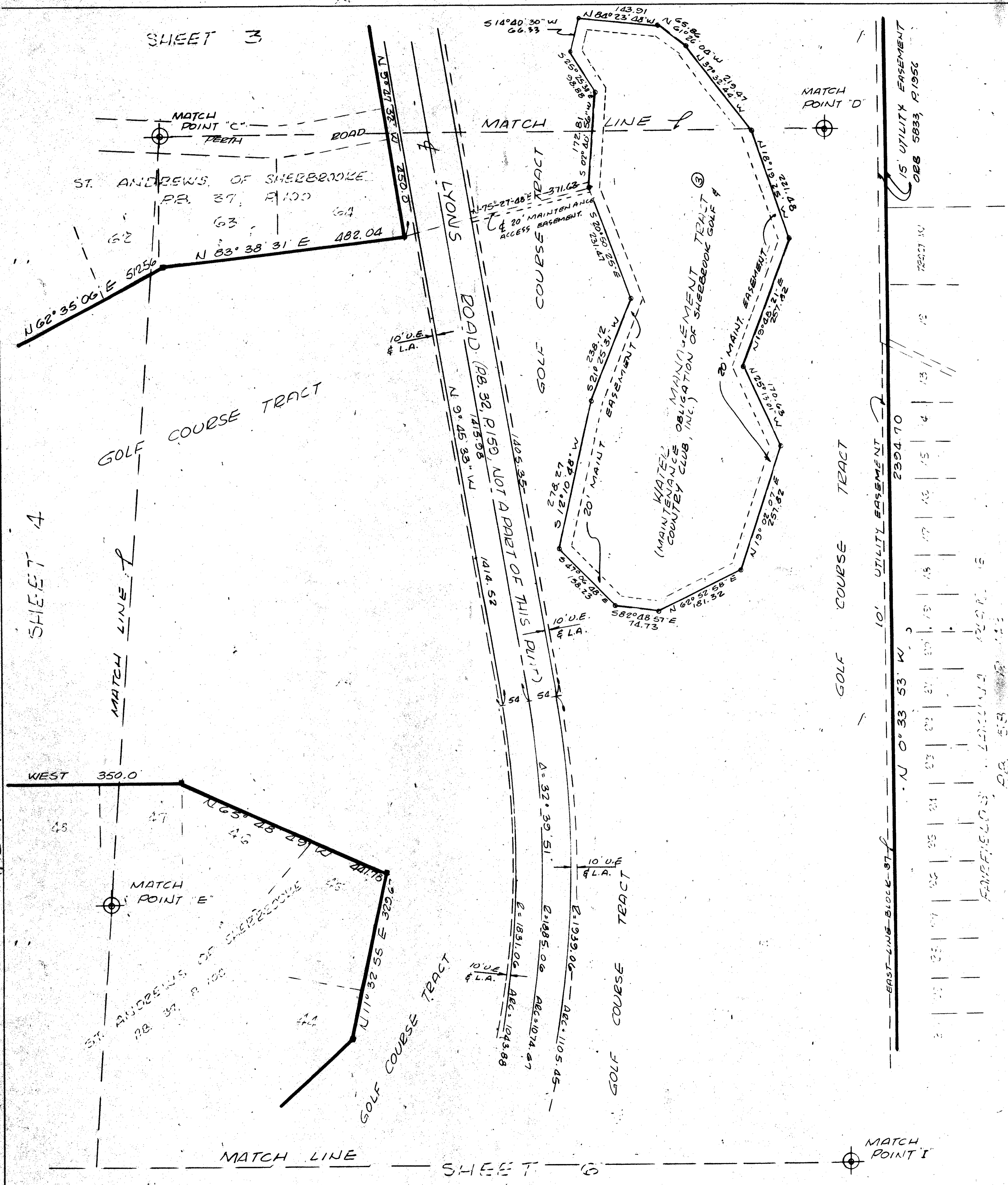


0309-010
69/190



LAND SURVEYORS
3285 B LAKE WORTH RD.
LAKE WORTH, FLORIDA 33461
PHONE (407) 585-1885

SHERBROOKE GOLF & COUNTRY CLUB



Sherbrooke Golf & Country Club
SUBDIVISION * Country Club
BOOK 6A PAGE 170A
FLOOD ZONE B
QUAD #49 ZONING RZ
SE ZIP CODE 33467
PUD NAME Sherbrooke
STUDY # 541516

TAZ = 741

SHEET 4

MATCH LINE

SHEET 6

MATCH POINT I